

PARENT

METAL PRODUCTS



Manufacturing High Quality
Steel Equipment
Since 1921

| | |
|-----------------------------------|-------|
| Storage Cabinets | 2-5 |
| XHD Shelving | 5 |
| File Storage | 6 |
| Desks | 6 |
| Computer Cabinets | 7 |
| Bookcases & Stock Carts | 8 |
| Lockers | 9 |
| Benches | 10-15 |
| Wall Cabinets | 15 |
| Shop Desks | 16 |
| Mobile Shop Cabinets | 17 |
| Shelf Trucks | 17 |
| Bins & Shelving | 18-24 |



172-S

Storage Cabinets

- All set-up, ready to use.
- Full height piano hinges.
- Shelves adjustable on 2" centers.
- Triple flanged shelves for extra strength.
- Full 1" thick pan reinforced doors.
- Ledge cornice top.
- Three point locking device with plated locking bars.
- Two handles on double door cabinets (1-Fixed, 1-Locking, 2-Keys)



142-S

Standard Cabinets

SHELF CAPACITY 200 LBS. EVENLY DISTRIBUTED

| MODEL NO. | SIZE (W x D x H) | NO. OF OPENINGS |
|-----------|---------------------|--------------------|
| 142-S | 36" x 18" x 42" | 3 |
| 242-S | 36" x 24" x 42" | 3 |
| 172-S | 36" x 18" x 72" | 5 |
| 272-S | 36" x 24" x 72" | 5 |
| 178-S | 36" x 18" x 78" | 5 |
| 278-S | 36" x 24" x 78" | 5 |

WARDROBE WITH HAT SHELF & COAT ROD

| | |
|-------|-----------------|
| 172-W | 36" x 18" x 72" |
| 272-W | 36" x 24" x 72" |
| 178-W | 36" x 18" x 78" |
| 278-W | 36" x 24" x 78" |

COMBINATION WITH HAT SHELF, 3 ADJUSTABLE SHELVES, DIVIDING PARTITION & COAT ROD

| | |
|-------|-----------------|
| 172-C | 36" x 18" x 72" |
| 272-C | 36" x 24" x 72" |
| 178-C | 36" x 18" x 78" |
| 278-C | 36" x 24" x 78" |



172-C



178-W



217-C



427-S

Heavy Duty
48" wide
Storage Cabinet

Heavy Duty Cabinets

SHELF CAPACITY 400 LBS. EVENLY DISTRIBUTED

| MODEL NO. | SIZE (W x D x H) | NO. OF OPENINGS |
|-----------|---------------------|--------------------|
| 217-S | 24" x 18" x 78" | 5 |
| 227-S | 24" x 24" x 78" | 5 |
| 317-S | 36" x 18" x 78" | 5 |
| 327-S | 36" x 24" x 78" | 5 |
| 427-S | 48" x 24" x 78" | 5 |

WARDROBE WITH HAT SHELF & COAT ROD

| | |
|-------|-----------------|
| 217-W | 24" x 18" x 78" |
| 227-W | 24" x 24" x 78" |
| 317-W | 36" x 18" x 78" |
| 327-W | 36" x 24" x 78" |
| 427-W | 48" x 24" x 78" |

COMBINATION WITH HAT SHELF, 3 ADJUSTABLE SHELVES, DIVIDING PARTITION & COAT ROD

| | |
|-------|-----------------|
| 217-C | 24" x 18" x 78" |
| 227-C | 24" x 24" x 78" |
| 317-C | 36" x 18" x 78" |
| 327-C | 36" x 24" x 78" |
| 427-C | 48" x 24" x 78" |

Mobile Storage Cabinets

Great for Mobile Storage

- Heavy duty 5" solid rubber casters (2-rigid and 2-swivel with brake).
- All set up and ready to use.
- Full height piano hinges for strength and security.
- Shelves adjust on 2" centers.
- Three point locking device with two handles.
- Lateral file is factory installed with full extension slides and will accommodate hanging files.
- Optional push handle available.



242-LF-CT



260-LF-CT

| MODEL NO. | SIZE (W x D x H) | DESCRIPTION |
|-----------|------------------|--------------------------------------|
| 142-S-CT | 36" x 18" x 48" | 2- Adjustable Shelves |
| 142-LF-CT | 36" x 18" x 48" | 2- Adjustable shelves & lateral file |
| 242-S-CT | 36" x 24" x 48" | 2- Adjustable Shelves |
| 242-LF-CT | 36" x 24" x 48" | 2- Adjustable shelves & lateral file |
| 260-S-CT | 36" x 24" x 66" | 3- Adjustable Shelves |
| 260-LF-CT | 36" x 24" x 66" | 3- Adjustable Shelves & lateral file |



260-S-CT



242-S-CT

Janitorial Cabinet

- All of the features of our mobile cabinets.
- Large, roomy cabinet for storage of maintenance and cleaning supplies.
- Also available without casters (272-J 36" x 24" x 72").

| MODEL NO. | SIZE (W x D x H) | DESCRIPTION |
|-----------|------------------|-----------------------|
| 272-J-CT | 36" x 24" x 78" | 3- Adjustable Shelves |



272-J-CT

Lateral File Only #31LF

- File Drawer has full extension drawer slides and will accommodate hanging files. Available factory installed in any of our 36" wide cabinets.

Caster Tray Only

- Heavy Duty Caster Tray easily converts all of our 36" & 48" wide cabinets into mobile cabinets.
- Each tray includes 2 rigid & 2 swivel w/brake 5" solid rubber casters.
- **CT-18** for cabinets 36" wide & 18" deep.
- **CT-24** for cabinets 36" wide & 24" deep.
- **CT-48** for cabinets 48" wide & 24" deep.



172-SGD

Visual Storage Cabinets

- Great cabinet for supplies when security and visibility are necessary.
- Doors are 16 gauge with full height piano hinges and shatterproof acrylic panels.
- Two handles provided (1 locking, 1 fixed), furnished with 2 keys.
- Three point locking device with plated locking bars.
- Shelves adjust on 2" centers.
- Ledge cornice top.
- Durable powder coat finish.
- Available in light gray and champagne.

Visual Storage Cabinets

| MODEL NO. | SIZE (W x D x H) | SHELF CAPACITY |
|-----------|------------------|----------------|
| 172-SGD | 36" x 18" x 72" | 200 lbs. |
| 272-SGD | 36" x 24" x 72" | 200 lbs. |

Heavy Duty Visual Cabinets

WITH EXPANDED METAL DOORS

| | | |
|----------|-----------------|----------|
| 3172-SED | 36" x 18" x 72" | 400 lbs. |
| 3272-SED | 36" x 24" x 72" | 400 lbs. |



278-BFD

Combination Cabinet

- 36" w x 24" d x 78" h
- Features rugged Drawer Unit with 1- File drawer & 1- Box drawer.

Heavy Duty Visual Storage Cabinets

- Excellent cabinet when ventilation, security, and visibility are important.
- Also good as a drying cabinet for ceramics.
- Can be converted into combination wardrobe-storage cabinet.
- Doors are 16 gauge with expanded metal fronts and full height piano hinges.
- Shelves are 18 gauge with a 400 lbs. capacity each and adjustable on 2" centers.
- Three point locking device with plated locking bars.
- Two handles provided (1 locking, 1 fixed), furnished with 2 keys.
- Available in Light Gray and Blue.



3172-SED

All Units Shipped Set-up & Ready to Use!

XHD Series

- Reinforced doors with full piano hinges and 3 point locking device.
- Optional fork lift base allows ease in moving loaded cabinet.
- Galvanized shelves for a long lasting durable finish that are scratch, oil and chemical resistant (800 lbs. capacity per shelf).
- Cabinets are rugged all welded construction made from 14 and 16 gauge steel.
- Cabinets are stocked in high visible precaution blue which is an electrostatically applied powder coated finish.
- Available in four sizes.



Louvered Panel

| MODEL NO. | SIZE (W x H) |
|-----------|--------------|
| 36SLP | 36" x 18" |

- Excellent for hanging plastic bins.
- Available factory installed in any of our 36" wide cabinets.



| MODEL NO. | SIZE |
|-----------|----------------------|
| XHD-3142 | (36"W x 18"D x 42"H) |
| XHD-3242 | (36"W x 24"D x 42"H) |
| XHD-3178 | (36"W x 18"D x 78"H) |
| XHD-3278 | (36"W x 24"D x 78"H) |
| XHD-FB18 | (18" Fork Lift Base) |
| XHD-FB24 | (24" Fork Lift Base) |

Fork lift base adds 4" to height of cabinet.

14 Gauge Shelving

- Parent EXTRA HEAVY DUTY SHELVING is ideal for storing dies, hardware kegs, castings, or other heavy items.
- 14 gauge shelves are 2" thick and flanged for extra strength.
- Posts are 2" x 2" x 11 gauge angles, punched on 1" centers.
- All units standard with four shelves, extra shelves available.

Shelving

| MODEL NO. | SIZE (WxD) | CAP. PER SHELF |
|----------------------|------------|----------------|
| 75" HIGH | | |
| XR4818-6 | 48" x 18" | 1750 lbs. |
| XR4824-6 | 48" x 24" | 1750 lbs. |
| XR6018-6 | 60" x 18" | 1500 lbs. |
| XR6024-6 | 60" x 24" | 1500 lbs. |
| 99" HIGH | | |
| XR4818-8 | 48" x 18" | 1750 lbs. |
| XR4824-8 | 48" x 24" | 1750 lbs. |
| XR6018-8 | 60" x 18" | 1500 lbs. |
| XR6024-8 | 60" x 24" | 1500 lbs. |
| EXTRA SHELVES | | |
| XS4818 | 48" x 18" | 1750 lbs. |
| XS4824 | 48" x 24" | 1750 lbs. |
| XS6018 | 60" x 18" | 1500 lbs. |
| XS6024 | 60" x 24" | 1500 lbs. |





4433

File Storage Cabinet

This adaptable cabinet provides the most efficient use of storage space. Three file drawers have full height sides to accommodate hanging files. Cabinet includes 2 adjustable shelves. Comes standard with locks. Ships fully assembled and ready for use. 36" wide x 18" deep x 42" high.

Desks

- Two 6 in. box drawers.
- All drawers have full extension drawer slides, rated at 125 lbs. per drawer.
- Three file drawers with full height sides to accommodate hanging files.
- 1.25 in. thick, high pressure laminate tops with backing sheet.
- Ergonomic flush drawer pulls with built-in locks.
- Durable powder coated finish.
- Pedestals are welded construction with leveling glides.
- Optional locking center drawer.
- Optional pull-out side shelf, for additional work surface.
- Optional wire management hole with grommet.



Heavy Duty Desks

| MODEL NO. | SIZE (W x D) |
|-----------|--------------|
| TPD-6024 | 60" x 24" |
| TPD-7224 | 72" x 24" |
| TPD-6030 | 60" x 30" |
| TPD-7230 | 72" x 30" |

Laptop Storage Cart

- Mobile storage for 24 laptops or 48 tablets.
- Heavy duty all welded construction, setup, ready to use.
- 16 gauge expanded metal doors provide excellent security, visibility and ventilation when storing or charging.
- Three point locking device.
- 6 – 3" wire management holes in rear for power cords.
- Rubber mat on top with 2 push handles.
- Moves easily on 5" casters, (2 – rigid, 2 – swivel with brakes).
- Size: 36" w x 24" d x 48" h.
- **UE800SB** outlet strip – 8 outlets, lighted on/off switch, resettable circuit breaker and 6 foot cord.



242-LTE



242-LTE
Back View

(Shown with 3 optional outlet strips)

Mobile Computer Cabinet

- Lateral file drawer (with full extension drawer slides) will accommodate hanging files.
- Both keyboard tray and printer shelf are equipped with heavy-duty pull out slides.
- Two shelves adjustable on 2" centers.
- Two handles with three point locking.
- Pan reinforced doors with full height piano hinges.
- Heavy duty 5" swivel casters with brakes.
- 3" wire management hole in back of cabinet for cords and ventilation.
- 36" w x 24" d x 78" h (overall with casters).



272-MCC



Bookcases

- All set-up, ready to use.
- Rugged construction for any office or classroom environment.
- Designed to utilize storage space.
- Shelves adjustable on 2" centers.
- Ledge cornice top.

| MODEL | SIZE (W x D x H) | NO. OF OPENINGS |
|-------|------------------|-----------------|
| 293 | 36" x 12" x 29" | 2 |
| 423 | 36" x 12" x 42" | 3 |
| 543 | 36" x 12" x 54" | 4 |
| 723 | 36" x 12" x 72" | 5 |
| 843 | 36" x 12" x 84" | 6 |
| 2938 | 36" x 18" x 29" | 2 |
| 4238 | 36" x 18" x 42" | 3 |
| 5438 | 36" x 18" x 54" | 4 |
| 7238 | 36" x 18" x 72" | 5 |
| 8438 | 36" x 18" x 84" | 6 |

Mobile Bookcases

With many of the same features as our standard bookcases, these are perfect for storing and moving books, binders, tapes and other supplies. Shelves adjustable on 2" centers. Furnished with 2 rigid and 2 swivel with brake casters.



Mobile Bookcases

| MODEL NO. | SIZE (W x D x H) | OPENINGS |
|-----------|------------------|----------|
| BC-3518 | 36" x 18" x 35" | 2 |
| BC-4818 | 36" x 18" x 48" | 3 |
| BC-6018 | 36" x 18" x 60" | 4 |



Stock Carts

INDUSTRIAL – 750 LB. CAPACITY

740-1630 – STOCK CART

Overall size is 16" x 30" x 32" high, including casters. Casters are 5" diameter with solid rubber tires for quiet operation. Trays have 3.25" flanges to prevent contents from sliding off. Ideal for any work requiring a compact, easily maneuvered carrier. Standard gray finish; shipped knocked down.

740-2436 – STOCK CART

Same as above, except overall size is 24" x 36" x 32" high, including casters.

NOTE: Intermediate tray available on both models.

All Steel, All Set Up Lockers

- Attractive styling that fits into any office environment, yet rugged enough for factory use.
- Can be used individually or bolted together in groups.
- Built in padlock hasps for security.
- Full height piano hinges for years of use.
- Single locker is furnished with two coat hooks and hat shelf.
- Double tier locker has two compartments each with 2 coat hooks.
- All set-up, ready to use — just remove from carton.
- Light gray finish.
- Doors are 18 gauge, housing and top are 22 gauge and bottom is 20 gauge.
- Visual lockers are excellent when visibility, ventilation & security are important.



2872-2

2872-1

2872-6

2860-4

2860-1



2872-6M

Shown with Optional Coat Rod Kit

| MODEL NO. | NUMBER OF COMPARTMENTS | OVERALL DIMENSIONS | COMPARTMENT SIZE |
|----------------------------|------------------------|-----------------------|--------------------|
| 2860-1 | 1 | 12.25"W x 18"D x 60"H | 12"W x 18"D x 56"H |
| 2860-4 | 4 | 12.25"W x 18"D x 60"H | 12"W x 18"D x 14"H |
| 2872-1 | 1 | 12.25"W x 18"D x 72"H | 12"W x 18"D x 68"H |
| 2872-2 | 2 | 12.25"W x 18"D x 72"H | 12"W x 18"D x 34"H |
| 2872-6 | 6 | 12.25"W x 18"D x 72"H | 12"W x 18"D x 11"H |
| VISUAL DOOR LOCKERS | | | |
| 2872-6M | 6 | 12.25"W x 18"D x 72"H | 12"W x 18"D x 11"H |
| COAT ROD KIT | | | |
| CRK-24 | Coat Rod Kit | Two 24" Coat Rods | |

Hydraulic Ergonomic Benches...

- Easy adjustment of work height from 30.75" to 42.75"
- Infinite adjustment with a capacity of 750 lbs.
- All steel components are heavy duty 14 gauge.
- 12" deep lower shelf/footrest standard with basic bench.
- Optional accessories: cantilever light and shelf, top shelf and bench drawer.
- Tops available: non-glare white high density plastic laminate, maple, steel and conductive (anti-static).



PLASTIC

| MODEL | SIZE (W x D) |
|-----------|--------------|
| HB-4830-P | 48" x 30" |
| HB-6030-P | 60" x 30" |
| HB-7230-P | 72" x 30" |

MAPLE

| MODEL | SIZE (W x D) |
|-----------|--------------|
| HB-4830-W | 48" x 30" |
| HB-6030-W | 60" x 30" |
| HB-7230-W | 72" x 30" |

STEEL

| MODEL | SIZE (W x D) |
|-----------|--------------|
| HB-4829-S | 48" x 29" |
| HB-6029-S | 60" x 29" |
| HB-7229-S | 72" x 29" |

*...infinite adjustment with
a capacity of 750 lbs.*

AP Series Electronic Workstations

- The best value in ergonomic assembly benches.
- Heavy duty all welded 14 gauge legs—adjustable from 31" to 35" high— complete with leveling glides.
- Non-glare white top with high density plastic laminate and backing sheet.
- ESD tops available.
- 14 gauge aprons front and rear eliminate top deflection.
- Standard sizes are 48", 60" and 72" wide; 30" deep.



AP Series Work Benches

Basic Bench: Plastic Laminate Top, Adjustable Legs w/Glides, Aprons & Stringer

MODEL NO.

| | |
|---------|---------------|
| AP-4830 | 48" W x 30" D |
| AP-6030 | 60" W x 30" D |
| AP-7230 | 72" W x 30" D |

ACCESSORIES

MODEL NO.

| | |
|--------|---|
| 6016-4 | Backboard - 48" W, Extends 3" above back of bench |
| 6016-5 | Backboard - 60" W, Extends 3" above back of bench |
| 6016-6 | Backboard - 72" W, Extends 3" above back of bench |

MODEL NO.

| | |
|-------|---|
| CTS-4 | Cantilever Shelf w/ 24"H Uprights - 48"W x 12"D |
| CTS-5 | Cantilever Shelf w/ 24"H Uprights - 60"W x 12"D |
| CTS-6 | Cantilever Shelf w/ 24"H Uprights - 72"W x 12"D |

MODEL NO.

| | |
|------|---|
| LF-4 | 38"H Uprights w/ 48" Light Fixture - 48"W |
| LF-5 | 38"H Uprights w/ 48" Light Fixture - 60"W |
| LF-6 | 38"H Uprights w/ 48" Light Fixture - 72"W |

MODEL NO.

| | |
|----------|---|
| CTS-LF-4 | Cantilever Shelf and Light with 38"H Uprights |
| CTS-LF-5 | Cantilever Shelf and Light with 38"H Uprights |
| CTS-LF-6 | Cantilever Shelf and Light with 38"H Uprights |

MODEL NO.

| | |
|------|----------------------------|
| BR-4 | Adjustable Bin Rail - 48"W |
| BR-5 | Adjustable Bin Rail - 60"W |
| BR-6 | Adjustable Bin Rail - 72"W |

MODEL NO.

| | |
|--------|------------------------------------|
| 6027-4 | Lower Shelf/Footrest - 48"W x 12"D |
| 6027-5 | Lower Shelf/Footrest - 60"W x 12"D |
| 6027-6 | Lower Shelf/Footrest - 72"W x 12"D |

MODEL NO.

| | |
|---------|--|
| UL401BC | 48" Outlet Strip with 8 Outlets, Lighted On/Off Switch, Circuit Breaker and 6' Cord and Plug |
|---------|--|

MODEL NO.

| | |
|-------|---|
| 1420 | With Mounting Kit - Single Tier Drawer 14"W x 20"D x 6"H |
| 822BF | With Mounting Kit - Hanging Pedestal w/ One Box & One File Drawer - 14.25"W x 22"D x 18.5"H |

Adjustable Height Channel Leg Benches

Heavy duty construction throughout; legs, stringers, shelves, backboards and end pieces are 14 gauge. Steel tops are 12 gauge. Channel legs available with glides for uneven floors and casters for mobile benches. Steel parts standard in gray finish. Tops stocked in plastic (non-glare white), conductive (anti-static), 12 gauge steel and wood. Shipped knocked down. Bench height adjusts from 30.75" to 34.75".

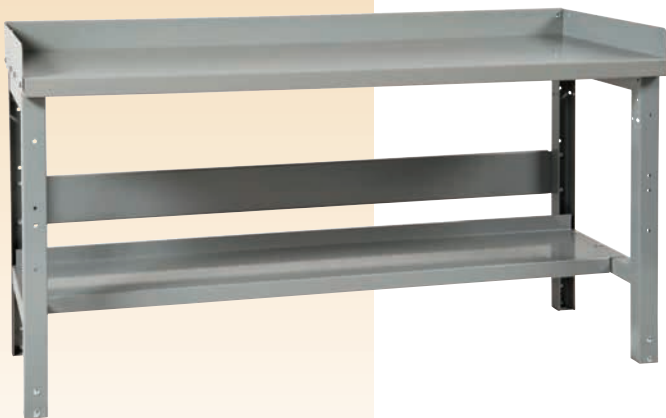


800

| LENGTH | DEPTH | WORKING SURFACE | | |
|--------|-------|-----------------|-----------|-----------|
| | | STEEL | PLASTIC | WOOD |
| 4' | 24" | 800-S-424 | 800-P-424 | 800-W-424 |
| 5' | 24" | 800-S-524 | 800-P-524 | 800-W-524 |
| 6' | 24" | 800-S-624 | 800-P-624 | 800-W-624 |
| 4' | 30" | 800-S-429 | 800-P-430 | 800-W-430 |
| 5' | 30" | 800-S-529 | 800-P-530 | 800-W-530 |
| 6' | 30" | 800-S-629 | 800-P-630 | 800-W-630 |
| 4' | 36" | 800-S-436 | 800-P-436 | 800-W-436 |
| 5' | 36" | 800-S-536 | 800-P-536 | 800-W-536 |
| 6' | 36" | 800-S-636 | 800-P-636 | 800-W-636 |

803

| LENGTH | DEPTH | WORKING SURFACE | | |
|--------|-------|-----------------|-----------|-----------|
| | | STEEL | PLASTIC | WOOD |
| 4' | 24" | 803-S-424 | 803-P-424 | 803-W-424 |
| 5' | 24" | 803-S-524 | 803-P-524 | 803-W-524 |
| 6' | 24" | 803-S-624 | 803-P-624 | 803-W-624 |
| 4' | 30" | 803-S-429 | 803-P-430 | 803-W-430 |
| 5' | 30" | 803-S-529 | 803-P-530 | 803-W-530 |
| 6' | 30" | 803-S-629 | 803-P-630 | 803-W-630 |
| 4' | 36" | 803-S-436 | 803-P-436 | 803-W-436 |
| 5' | 36" | 803-S-536 | 803-P-536 | 803-W-536 |
| 6' | 36" | 803-S-636 | 803-P-636 | 803-W-636 |



806

| LENGTH | DEPTH | WORKING SURFACE | | |
|--------|-------|-----------------|-----------|-----------|
| | | STEEL | PLASTIC | WOOD |
| 4' | 24" | 806-S-424 | 806-P-424 | 806-W-424 |
| 5' | 24" | 806-S-524 | 806-P-524 | 806-W-524 |
| 6' | 24" | 806-S-624 | 806-P-624 | 806-W-624 |
| 4' | 30" | 806-S-429 | 806-P-430 | 806-W-430 |
| 5' | 30" | 806-S-529 | 806-P-530 | 806-W-530 |
| 6' | 30" | 806-S-629 | 806-P-630 | 806-W-630 |
| 4' | 36" | 806-S-436 | 806-P-436 | 806-W-436 |
| 5' | 36" | 806-S-536 | 806-P-536 | 806-W-536 |
| 6' | 36" | 806-S-636 | 806-P-636 | 806-W-636 |

Work Bench Accessories

TOP SHELF

10" deep; 12" high.

| MODEL NO. | LENGTH |
|-----------|--------|
| 6024-4 | 48" |
| 6024-5 | 60" |
| 6024-6 | 72" |



BENCH DRAWERS

Heavy duty welded construction with full extension drawer slides that allow easy operation with heaviest loads. Multi-unit design allows for stacking drawers.

| | |
|------|----------------------|
| 1420 | 14" W x 20" D x 6" H |
|------|----------------------|



DRAWER CYLINDER LOCK #3000

Cylinder lock fits all drawers. Furnished with 2 keys and is master keyed.



STRINGER

Channel shape 5" wide.

| MODEL NO. | LENGTH |
|-----------|--------|
| 6010-4 | 47.25" |
| 6010-5 | 59.25" |
| 6010-6 | 71.25" |



LOWER SHELF / FOOT REST

12" deep; 1.625" flange front and back.

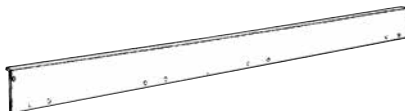
| MODEL NO. | LENGTH | HEIGHT |
|-----------|--------|--------|
| 6027-4 | 47.25" | 12" |
| 6027-5 | 59.25" | 12" |
| 6027-6 | 71.25" | 12" |



BACK BOARD

Extends 3" above back of bench.

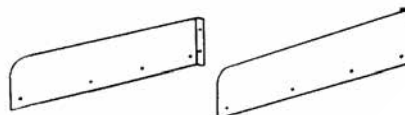
| MODEL NO. | LENGTH | HEIGHT |
|-----------|--------|--------|
| 6016-4 | 48" | 4.25" |
| 6016-5 | 60" | 4.25" |
| 6016-6 | 72" | 4.25" |



END PIECES

Furnished in pairs to inter member with back boards.

| MODEL NO. | DEPTH | HEIGHT |
|-----------|-------|--------|
| 6020-24 | 24" | 4" |
| 6020-29 | 29" | 4" |
| 6020-36 | 36" | 4" |



PORTABLE WORK BENCH

All Parent 800 Series channel leg benches are available as mobile benches. Casters are heavy duty 5" solid rubber (2 rigid – 2 swivel with brakes). (#ABL - Caster Kit)

ADJUSTABLE BENCH LEGS

Adjusts on 1" increments, up to 4"

| MODEL NO. | DIMENSIONS | |
|-----------|------------|-----------|
| | WIDTH | HEIGHT |
| 8300-21 | 21" | 29" - 33" |
| 8300-28 | 28.5" | 29" - 33" |
| 8300-34 | 34.5" | 29" - 33" |
| 9400-21 | 21" | 33" - 37" |
| 9400-28 | 28.5" | 33" - 37" |
| 9400-34 | 34.5" | 33" - 37" |





Shown with top shelf, plastic top, drawer unit, base and channel leg. (Height 32.75")

High Topshelf (15" DEEP)

| MODEL NO. | LENGTH | HEIGHT |
|-----------|--------|--------|
| H6018 | 60" | 18" |
| H7218 | 72" | 18" |

Ideal for storage of instruments and meters above and below the shelf.

Modular Benches

- All Box and File Drawers have full extension drawer slides (100% of drawer is accessible) rated at 125 lbs. per drawer.
- Ergonomic drawer pull is an integral part of the drawer front and does not protrude beyond the front of the unit.
- All file drawers have full height sides to accommodate hanging files.
- Locks standard on all units.
- Cabinet is equipped with one adjustable shelf.
- All units furnished with heavy duty leveling glides.
- Choice of finishes available in a durable, long lasting powder coat.
- Available with wood, plastic or anti-static tops.



Shown above with maple top. Sitting height (29.25").

722 UNITS:

14.25" W x 22" D x 27.5" H

728 UNITS:

14.25" W x 27.5" D x 27.5" H

Base

B-1422 for 722 Series

B-1428 for 728 Series

Adds 3.5" to height of unit.



Shown with top shelf, plastic top and apron for bench. Height (34.25")



722-C
728-C

722-BB
728-BB

722-FF
728-FF

722-BF
728-BF

Apron

Increases workstation from sitting height (29.25") to bench height (34.25"). Available for benches 60" and 72".

722 Series Apron

| MODEL NO. | LENGTH | DEPTH |
|-----------|--------|-------|
| PED6022 | 56" | 22" |
| PED7222 | 68" | 22" |

728 Series Apron

| MODEL NO. | LENGTH | DEPTH |
|-----------|--------|-------|
| PED6028 | 56" | 27.5" |
| PED7228 | 68" | 27.5" |

Locker & Cabinet Bases

- All welded heavy-duty construction.
- Can be used individually or bolted together in groups.
- Locker bases will accept padlock or optional flush mount lock and have spring loaded piano hinges.
- Cabinet bases have full height piano hinges, three point locking handle and one adjustable shelf.
- Choice of finishes in durable, long lasting powder coat.
- Bases shown with optional wood top.

| MODEL NO. | SIZE (W x D x H) | OPENINGS (W x D x H) |
|-----------|------------------|----------------------|
| 101-C | 36" x 21" x 31" | 1- 36" x 21" x 31" |
| 402-B | 12" x 21" x 31" | 2- 12" x 21" x 15" |
| 303-B | 18" x 21" x 31" | 3- 18" x 21" x 10" |



402-B



303-B



101-C

Slope Top Wall Cabinets

330-1224

Size is 24" wide, 12" deep, 30" high (front) 33" high (back). Equipped with two adjustable shelves, full height piano hinges and chrome plated locking handle. Shipped all welded, set-up.

330-1236

Size is 36" wide, 12" deep, 30" high (front) 33" high (back). Otherwise same as above.



Shop Desks

#400 Shop Desk

Size is 36" wide, 25" deep, 43" high (front) 51" high (back). Equipped with roomy drawer 24" wide, 22" deep, 4" high and supplied with a cylinder lock. Standard gray finish. Shipped knocked down.



#401 Wall Mounted Desk

Size is the same as standing model. Saves space by mounting to wall with 2 brackets furnished. Standard gray finish. Shipped knocked down.



#409 Cabinet Desk Set-Up/All Welded

Heavy Duty All Welded Construction, size is 36" wide x 25" deep x 43" high (front) 51" (rear). Roomy locking Drawer (24" wide x 22" deep x 4" high). Large Cabinet with easily adjustable shelf, three point locking handle and full piano hinges. Standard gray finish.

#409-C Portable Cabinet Desk

All welded set-up #409 unit with four 5" solid rubber casters, all swivel with brakes.



All Desks Standard With Full Extension Drawer Slides

Mobile Shop Cabinets

- Drawer units and cabinets are heavy-duty all welded.
- Drawers have full extension drawer slides, rated at 125 lbs. per drawer.
- Cabinets have one adjustable shelf.
- 14 Gauge work surface with 3" Back & End stops.
- Flush mounted locks and drawer pulls.
- Powder coated finish.
- Heavy-duty 5" casters (2- rigid, 2- swivel with brakes).
- All units are 29" wide x 22" deep x 34" high.



924-CC



924-CBF



924-BFB

| MODEL NO. | DESCRIPTION |
|-----------|---|
| 924-CC | 2- Cabinets |
| 924-CBF | 1- Cabinet, 2- 6" Drawers, 1- 12" Drawer |
| 924-BFB | 4- 6" Drawers, 2- 12" Drawers |

Shelf Trucks

- Heavy duty construction.
- 13 Gauge Posts.
- Shelves adjust on 1" centers.
- Tubular push handle.
- Heavy Duty 5" solid rubber casters (2 rigid; 2 swivel; brakes optional).
- 12 models available.

| MODEL NO. | SIZE (WxD) | TYPE |
|-----------|------------|--------------|
| 571-3618 | 36" x 18" | Open |
| 571-3624 | 36" x 24" | Open |
| 571-4818 | 48" x 18" | Open |
| 571-4824 | 48" x 24" | Open |
| 572-3618 | 36" x 18" | Closed Ends |
| 572-3624 | 36" x 24" | Closed Ends |
| 572-4818 | 48" x 18" | Closed Ends |
| 572-4824 | 48" x 24" | Closed Ends |
| 573-3618 | 36" x 18" | Closed Model |
| 573-3624 | 36" x 24" | Closed Model |
| 573-4818 | 48" x 18" | Closed Model |
| 573-4824 | 48" x 24" | Closed Model |



ALL MODELS 57" HIGH.
Standard gray finish;
shipped knocked down.



Bin Units

PRE-ASSEMBLED BIN UNITS

These set-up bin units arrive ready for use, just stack and bolt together or use individually. All units are 36" wide and 37.25" high and feature 20 gauge shelves and dividers with rolled front edges that adjust on 1" centers. The most popular combinations are shown below, but the possibilities are endless.



Great for organizing bench tops or as under counter units!

| CONFIGURATION | MODEL NO. | |
|----------------------------|----------------|----------------|
| | 12" DEEP UNITS | 18" DEEP UNITS |
| 6 Bins 18" wide x 12" high | BIN-361206 | BIN-361806 |
| 9 Bins 12" wide x 12" high | BIN-361209 | BIN-361809 |
| 12 Bins 9" wide x 12" high | BIN-361212 | BIN-361812 |
| 24 Bins 9" wide x 6" high | BIN-361224 | BIN-361824 |
| 36 Bins 6" wide x 6" high | BIN-361236 | BIN-361836 |



Industrial Shelving

- Parent offers the most economical and dependable storage in your factory warehouse or office stockrooms.
- Pick from heavy duty industrial 18 gauge shelves or standard 20 gauge shelves.
- Stocked 36", 42" and 48" wide, 12", 18" and 24" deep and 3'3", 6'3", 7'3", 8'3" and 10'3" high.
- 14 gauge roll formed post used with compression clips. Allows shelf adjustment on 1.5" centers. Front Flange 1" – Side Flange 2".
- Shipped knock-down, stocked in gray polyester finish.
- Other sizes and components available.
- Our most popular units are shown.



CS-535-18



CS-536-12

Open Shelving

| DEPTH | 5-SHELVES MODEL NO. | 6-SHELVES MODEL NO. | 7-SHELVES MODEL NO. | 8-SHELVES MODEL NO. |
|-----------------------------|------------------------|------------------------|------------------------|------------------------|
| 36" WIDE x 7'3" HIGH | | | | |
| Starting Units | | | | |
| 12" | CS-535-12 | CS-635-12 | CS-735-12 | CS-835-12 |
| 18" | CS-535-18 | CS-635-18 | CS-735-18 | CS-835-18 |
| 24" | CS-535-24 | CS-635-24 | CS-735-24 | CS-835-24 |
| Add-On Units | | | | |
| 12" | CA-535-12 | CA-635-12 | CA-735-12 | CA-835-12 |
| 18" | CA-535-18 | CA-635-18 | CA-735-18 | CA-835-18 |
| 24" | CA-535-24 | CA-635-24 | CA-735-24 | CA-835-24 |
| 48" WIDE x 7'3" HIGH | | | | |
| Starting Units | | | | |
| 12" | CS-547-12 | CS-647-12 | CS-747-12 | CS-847-12 |
| 18" | CS-547-18 | CS-647-18 | CS-747-18 | CS-847-18 |
| 24" | CS-547-24 | CS-647-24 | CS-747-24 | CS-847-24 |
| Add-On Units | | | | |
| 12" | CA-547-12 | CA-647-12 | CA-747-12 | CA-847-12 |
| 18" | CA-547-18 | CA-647-18 | CA-747-18 | CA-847-18 |
| 24" | CA-547-24 | CA-647-24 | CA-747-24 | CA-847-24 |

Closed Shelving

| DEPTH | 5-SHELVES MODEL NO. | 6-SHELVES MODEL NO. | 7-SHELVES MODEL NO. | 8-SHELVES MODEL NO. |
|-----------------------------|------------------------|------------------------|------------------------|------------------------|
| 36" WIDE x 7'3" HIGH | | | | |
| Starting Units | | | | |
| 12" | CS-536-12 | CS-636-12 | CS-736-12 | CS-836-12 |
| 18" | CS-536-18 | CS-636-18 | CS-736-18 | CS-836-18 |
| 24" | CS-536-24 | CS-636-24 | CS-736-24 | CS-836-24 |
| Add-On Units | | | | |
| 12" | CA-536-12 | CA-636-12 | CA-736-12 | CA-836-12 |
| 18" | CA-536-18 | CA-636-18 | CA-736-18 | CA-836-18 |
| 24" | CA-536-24 | CA-636-24 | CA-736-24 | CA-836-24 |
| 48" WIDE x 7'3" HIGH | | | | |
| Starting Units | | | | |
| 12" | CS-548-12 | CS-648-12 | CS-748-12 | CS-848-12 |
| 18" | CS-548-18 | CS-648-18 | CS-748-18 | CS-848-18 |
| 24" | CS-548-24 | CS-648-24 | CS-748-24 | CS-848-24 |
| Add-On Units | | | | |
| 12" | CA-548-12 | CA-648-12 | CA-748-12 | CA-848-12 |
| 18" | CA-548-18 | CA-648-18 | CA-748-18 | CA-848-18 |
| 24" | CA-548-24 | CA-648-24 | CA-748-24 | CA-848-24 |



Open Folder Shelving Units

Parent shelving can be used for open folder filing systems as shown. This application allows quick access to a large number of records.

Economical shelving keeps total system cost at a minimum without compromising accessibility. Use of intermediate partitions allows removal of files without disturbing adjacent folders.

Bin Units

Steel Bin Units shown are 36" wide x 7'3" high with closed sides, backs & bases. Units can be furnished 12", 18" and 24" deep.

Illustrated are just a few of the many variations of *Parent Shelving Units*.



Unit #24

Number of Bins: 21
12" W x 12"H



Unit #14

Number of Bins: 20
12 – 9" W x 12" H
8 – 18" W x 12" H



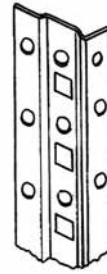
Unit #13

Number of Bins: 36
32 – 9" W x 9" H
4 – 9" W x 12" H

Shelving Components

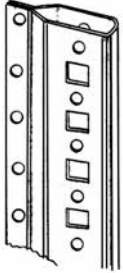
OFFSET ANGLE POST

14 Gauge roll formed post used with compression clips. Allows shelf adjustment on 1.5" centers. Front flange 1"—Side flange 2".



BOX POST

14 Gauge roll formed post used with compression clips. (1.5" adjustment). Box design allows full access of entire shelf, excellent for archive storage. Front flange .5"—Side flange 2".



SHELF CLIP

Heavy gauge compression clip. Used to provide easy shelf adjustment.



Bin Dividers

| MODEL NO. | SIZE (D x H) |
|-----------|--------------|
| SBD-1206 | 12" x 6" |
| SBD-1209 | 12" x 9" |
| SBD-1212 | 12" x 12" |
| SBD-1218 | 12" x 18" |
| SBD-1806 | 18" x 6" |
| SBD-1809 | 18" x 9" |
| SBD-1812 | 18" x 12" |
| SBD-1818 | 18" x 18" |
| SBD-2406 | 24" x 6" |
| SBD-2409 | 24" x 9" |
| SBD-2412 | 24" x 12" |
| SBD-2418 | 24" x 18" |

STANDARD SHELF

Shelving Capacity Chart

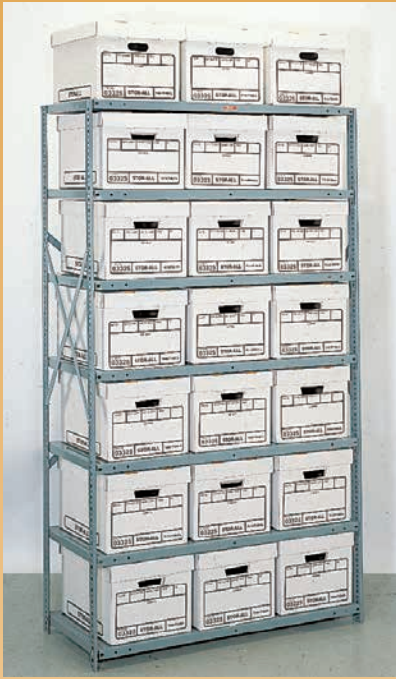
| | CLASS 0 (No Angles) | | CLASS 1 (1-Angle) | | CLASS 2 (2-Angles) | |
|---------|------------------------|----------|----------------------|---------|-----------------------|----------|
| | 20 Gauge | 18 Gauge | 20 Gauge | 18Gauge | 20 Gauge | 18 Gauge |
| 36 x 12 | 425 | 650 | 625 | 750 | 750 | 925 |
| 36 x 18 | 425 | 650 | 625 | 750 | 750 | 925 |
| 36 x 24 | 425 | 650 | 625 | 750 | 750 | 925 |
| 36 x 30 | - | 600 | - | 700 | - | 800 |
| 36 x 36 | - | 600 | - | 700 | - | 800 |
| 42 x 12 | 375 | 500 | 475 | 550 | 550 | 725 |
| 42 x 18 | 375 | 500 | 475 | 550 | 550 | 725 |
| 42 x 24 | 375 | 500 | 475 | 550 | 550 | 725 |
| 42 x 30 | - | 450 | - | 500 | - | 675 |
| 42 x 36 | - | 450 | - | 500 | - | 675 |
| 48 x 12 | 325 | 425 | 425 | 500 | 500 | 650 |
| 48 x 18 | 325 | 425 | 425 | 500 | 500 | 650 |
| 48 x 24 | 325 | 425 | 425 | 500 | 500 | 650 |
| 48 x 30 | - | 350 | - | 375 | - | 550 |
| 48 x 36 | - | 350 | - | 375 | - | 550 |

NOTE:

1. These capacities are for evenly distributed static loads.
2. Consult factory sales personnel for higher capacities.
3. To gain maximum capacity rebars must be bolted to posts.

Record Storage Units

- Economical high density record storage. Maximize use of storage space!
- Modular units allow quick access to all stored records.
- Easy assembly! Sets up fast for years of service.
- Add on units install without disturbing existing units.
- Units for single or double depth and height storage boxes.
- High quality, long wearing polyester finish.
- 42" wide, 18 or 20 gauge shelves standard on all units.
- Box posts allow full access of shelf.



BS-741-186



BS-441-326

| | DOUBLE DEPTH • 32" DEEP | | SINGLE DEPTH • 18" DEEP | |
|------------------|----------------------------|----------------------------|----------------------------|----------------------------|
| 6'3" TALL UNITS | 4 SHELF (Double Height) | 7 SHELF (Single Height) | 4 SHELF (Double Height) | 7 SHELF (Single Height) |
| Model No. | BS-441-326 | BS-741-326 | BS-441-186 | BS-741-186 |
| Number of boxes | 48 | 42 | 24 | 21 |
| Add on Model No. | BA-441-326 | BA-741-326 | BA-441-186 | BA-741-186 |
| 8'3" TALL UNITS | 5 SHELF (Double Height) | 9 SHELF (Single Height) | 5 SHELF (Double Height) | 9 SHELF (Single Height) |
| Model No. | BS-541-328 | BS-941-328 | BS-541-188 | BS-941-188 |
| Number of boxes | 60 | 54 | 30 | 27 |
| Add on Model No. | BA-541-328 | BA-941-328 | BA-541-188 | BA-941-188 |

Configuration varies by weight of loaded boxes and frequency of access. Consult factory for other sizes and configurations.



PC-3185

PC Shelving

These individually packed units are ideal for general storage. An economical solution that provides easy access to all items. They assemble in a matter of minutes and the intermediate shelves adjust on clips.

| MODEL NO. | W x D x H |
|-----------|-----------------|
| PC-3125 | 36" x 12" x 75" |
| PC-3185 | 36" x 18" x 75" |
| PC-3245 | 36" x 24" x 75" |

Economical Storage for Large, Bulky Items

- Access from all four sides.
- Beams adjust on 1.5" centers.
- Posts & Beams are 14 gauge with gray polyester finish.
- Beams easily snap into posts as shown.
- Standard duty or heavy duty units.
- Use tie plates for continuous rows.
- Available with galvanized steel decking.
- All units standard with four levels.



Beams easily snap into posts as shown above.



Particle board decking is also available from any lumber yard or home center.



STANDARD DUTY WITHOUT STEEL DECKING

| MODEL NO. | SIZE (W x D x H) | CAP. PER LEVEL |
|-----------|------------------|----------------|
| SRA-4524 | 60" x 24" x 84" | 1200 lbs. |
| SRA-4530 | 60" x 30" x 84" | 1200 lbs. |
| SRA-4536 | 60" x 36" x 84" | 1200 lbs. |
| SRA-4542 | 60" x 42" x 84" | 1200 lbs. |
| SRA-4548 | 60" x 48" x 84" | 1200 lbs. |
| SRA-4624 | 72" x 24" x 84" | 1000 lbs. |
| SRA-4630 | 72" x 30" x 84" | 1000 lbs. |
| SRA-4636 | 72" x 36" x 84" | 1000 lbs. |
| SRA-4642 | 72" x 42" x 84" | 1000 lbs. |
| SRA-4648 | 72" x 48" x 84" | 1000 lbs. |
| SRA-4824 | 96" x 24" x 84" | 620 lbs. |
| SRA-4830 | 96" x 30" x 84" | 620 lbs. |
| SRA-4836 | 96" x 36" x 84" | 620 lbs. |
| SRA-4842 | 96" x 42" x 84" | 620 lbs. |
| SRA-4848 | 96" x 48" x 84" | 620 lbs. |

STANDARD DUTY WITH STEEL DECKING

| MODEL NO. | SIZE (W x D x H) | CAP. PER LEVEL |
|-------------|------------------|----------------|
| SRA-4524-SD | 60" x 24" x 84" | 1200 lbs. |
| SRA-4530-SD | 60" x 30" x 84" | 1200 lbs. |
| SRA-4536-SD | 60" x 36" x 84" | 1200 lbs. |
| SRA-4542-SD | 60" x 42" x 84" | 1200 lbs. |
| SRA-4548-SD | 60" x 48" x 84" | 1200 lbs. |
| SRA-4624-SD | 72" x 24" x 84" | 1000 lbs. |
| SRA-4630-SD | 72" x 30" x 84" | 1000 lbs. |
| SRA-4636-SD | 72" x 36" x 84" | 1000 lbs. |
| SRA-4642-SD | 72" x 42" x 84" | 1000 lbs. |
| SRA-4648-SD | 72" x 48" x 84" | 1000 lbs. |
| SRA-4824-SD | 96" x 24" x 84" | 620 lbs. |
| SRA-4830-SD | 96" x 30" x 84" | 620 lbs. |
| SRA-4836-SD | 96" x 36" x 84" | 620 lbs. |
| SRA-4842-SD | 96" x 42" x 84" | 620 lbs. |
| SRA-4848-SD | 96" x 48" x 84" | 620 lbs. |

HEAVY DUTY WITHOUT STEEL DECKING

| MODEL NO. | SIZE (W x D x H) | CAP. PER LEVEL |
|-----------|------------------|----------------|
| SRC-4524 | 60" x 24" x 84" | 1750 lbs. |
| SRC-4530 | 60" x 30" x 84" | 1750 lbs. |
| SRC-4536 | 60" x 36" x 84" | 1750 lbs. |
| SRC-4542 | 60" x 42" x 84" | 1750 lbs. |
| SRC-4548 | 60" x 48" x 84" | 1750 lbs. |
| SRC-4624 | 72" x 24" x 84" | 1500 lbs. |
| SRC-4630 | 72" x 30" x 84" | 1500 lbs. |
| SRC-4636 | 72" x 36" x 84" | 1500 lbs. |
| SRC-4642 | 72" x 42" x 84" | 1500 lbs. |
| SRC-4648 | 72" x 48" x 84" | 1500 lbs. |
| SRC-4824 | 96" x 24" x 84" | 1000 lbs. |
| SRC-4830 | 96" x 30" x 84" | 1000 lbs. |
| SRC-4836 | 96" x 36" x 84" | 1000 lbs. |
| SRC-4842 | 96" x 42" x 84" | 1000 lbs. |
| SRC-4848 | 96" x 48" x 84" | 1000 lbs. |

HEAVY DUTY WITH STEEL DECKING

| MODEL NO. | SIZE (W x D x H) | CAP. PER LEVEL |
|-------------|------------------|----------------|
| SRC-4524-SD | 60" x 24" x 84" | 1750 lbs. |
| SRC-4530-SD | 60" x 30" x 84" | 1750 lbs. |
| SRC-4536-SD | 60" x 36" x 84" | 1750 lbs. |
| SRC-4542-SD | 60" x 42" x 84" | 1750 lbs. |
| SRC-4548-SD | 60" x 48" x 84" | 1750 lbs. |
| SRC-4624-SD | 72" x 24" x 84" | 1500 lbs. |
| SRC-4630-SD | 72" x 30" x 84" | 1500 lbs. |
| SRC-4636-SD | 72" x 36" x 84" | 1500 lbs. |
| SRC-4642-SD | 72" x 42" x 84" | 1500 lbs. |
| SRC-4648-SD | 72" x 48" x 84" | 1500 lbs. |
| SRC-4824-SD | 96" x 24" x 84" | 1000 lbs. |
| SRC-4830-SD | 96" x 30" x 84" | 1000 lbs. |
| SRC-4836-SD | 96" x 36" x 84" | 1000 lbs. |
| SRC-4842-SD | 96" x 42" x 84" | 1000 lbs. |
| SRC-4848-SD | 96" x 48" x 84" | 1000 lbs. |

Industrial Boltless Shelving

Designed For Fast, Easy "Boltless" Assembly

- Steel shelves just drop into place (4 per unit).
- Access from all four sides without any cross bracing.
- Components snap together without any nuts, bolts or clips.
- Posts and beams are 14 gauge with a gray polyester finish.
- Shelves adjust on 1.5" centers.
- All units 72" high (so top shelf is accessible).



Single Rivet Unit

Double Rivet Unit



Blue • Black • ASA 49 Gray • Lt. Gray • Champagne

Standard Duty (Single Rivet)

| MODEL NO. | SIZE (W x D x H) | CAPACITY/SHELF |
|-------------|------------------|----------------|
| SRB-4318-SH | 36" x 18" x 72" | 600 #'s |
| SRB-4324-SH | 36" x 24" x 72" | 600 #'s |
| SRB-4330-SH | 36" x 30" x 72" | 600 #'s |
| SRB-4418-SH | 48" x 18" x 72" | 500 #'s |
| SRB-4424-SH | 48" x 24" x 72" | 500 #'s |
| SRB-4430-SH | 48" x 30" x 72" | 500 #'s |

Heavy Duty (Double Rivet)

| MODEL NO. | SIZE (W x D x H) | CAPACITY/SHELF |
|-------------|------------------|----------------|
| SRA-4318-SH | 36" x 18" x 72" | 1200 #'s |
| SRA-4324-SH | 36" x 24" x 72" | 1200 #'s |
| SRA-4330-SH | 36" x 30" x 72" | 1200 #'s |
| SRA-4418-SH | 48" x 18" x 72" | 1000 #'s |
| SRA-4424-SH | 48" x 24" x 72" | 1000 #'s |
| SRA-4430-SH | 48" x 30" x 72" | 1000 #'s |

Paint Schedule

| COLOR | SHELVING STOCK CARTS | STORAGE CABINETS | BOOKCASES | INDUSTRIAL FURNITURE SHOP EQUIPMENT | DESKS | LOCKERS |
|-------------|----------------------|------------------|-----------|-------------------------------------|-------|---------|
| ASA 49 Gray | ✓ | — | — | ✓ | • | — |
| Light Gray | — | ✓ | ✓ | • | • | ✓ |
| Champagne | — | ✓ | ✓ | • | • | — |
| Blue | — | ✓ | ✓ | • | • | — |
| Black | — | ✓ | ✓ | • | • | — |

✓ Most items available from quick ship • Available from production schedule — Consult Factory

PARENT METAL PRODUCTS

